

*Executive Summary of the COVID-19 PSH Relief
Funds from FY 2020 Supplemental Budget
spend down*

*Led by Massachusetts Housing & Shelter Alliance
in partnership with United Way of Massachusetts Bay
and Merrimack Valley*



September 2021

COVID-19 PSH Relief Funds: \$5.8 Million

First round of relief: March 2020 - June 2021

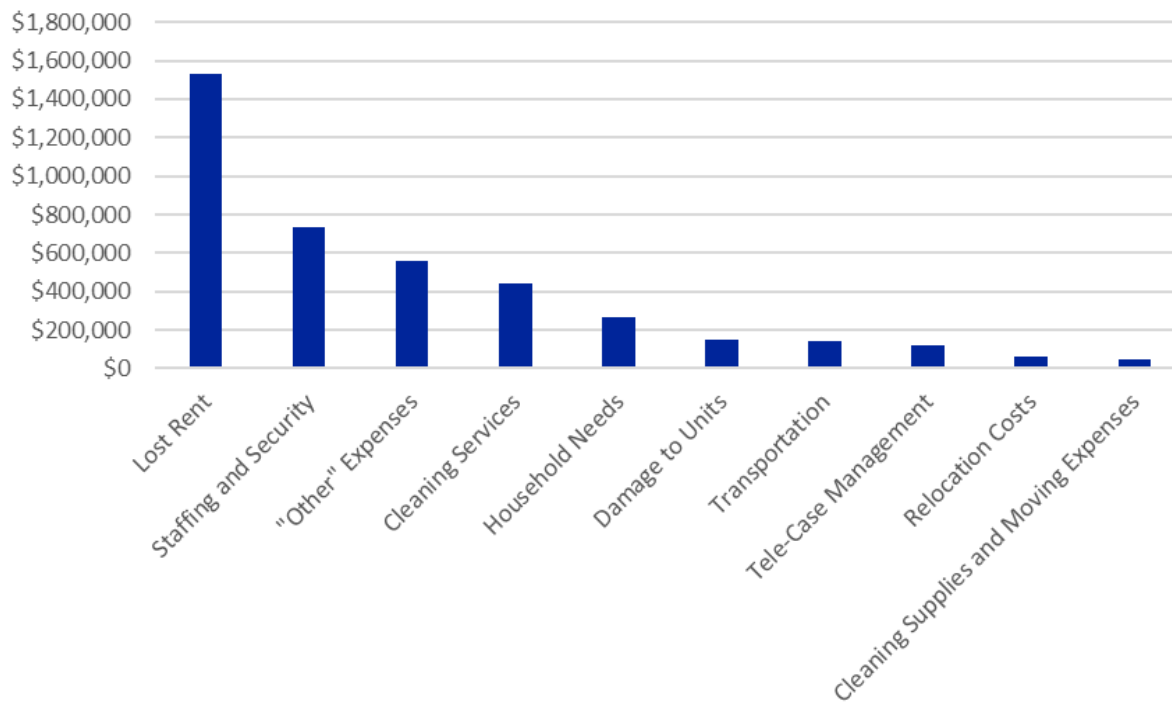
Prepared by the Massachusetts Housing & Shelter Alliance

Permanent supportive housing (PSH) providers faced many unexpected costs during the COVID-19 Pandemic. *Many tenants living in PSH units have complex disabling conditions and histories of homelessness, putting them at high risk of COVID-19 infection.*

The Massachusetts Housing & Shelter Alliance (MHSA) flagged this gap—sites with a high-risk population but not covered by FEMA or other federal emergency relief. The Massachusetts state legislature responded to this urgent need with \$5.8 million in relief funds.

The Massachusetts Department of Housing and Community Development (DHCD) asked MHSA to administer the funds, and MHSA partnered with United Way of Massachusetts Bay and Merrimack Valley to distribute relief funds to sites as quickly as possible.

Reimbursements by Funding Category



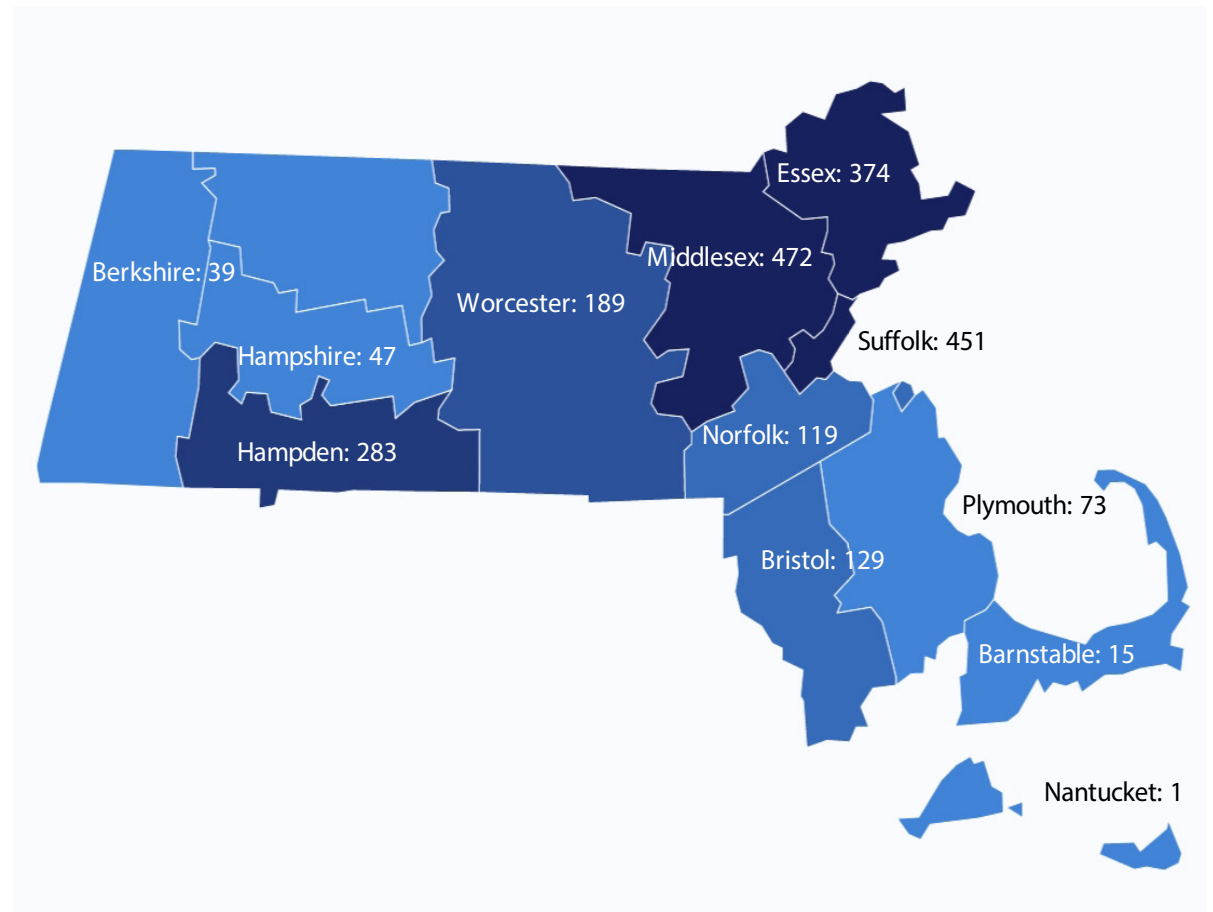
| Funding Category | Percentage of Total Funding |
|---------------------------------------|-----------------------------|
| Lost Rent | 38% |
| Staffing and Security | 18% |
| "Other" Expenses | 14% |
| Cleaning Services | 11% |
| Household Needs | 7% |
| Damage to Units | 4% |
| Transportation | 4% |
| Tele-Case Management | 3% |
| Relocation Costs | 2% |
| Cleaning Supplies and Moving Expenses | 1% |
| Total Funding: | \$4,059,434 |

Unallocated funds will cover other PSH needs in the year ahead

Providers Receiving Funding

Abby Kelley Foster House, Inc.
Action Inc.
Bridgewell
Cape and Islands Veterans Outreach Center
Caritas Communities Inc
Chelsea SRO Project
Clinical & Support Options Inc.
Commonwealth Land Trust, Inc.
Community Counseling of Bristol County
Dismas House of Massachusetts
Ecumenical Social Action Committee, Inc.
FamilyAid Boston
Father Bill's & MainSpring, Inc.
GAAMHA Inc.
Gandara Center
Heading Home, Inc.
Hilltown Community Development Corporation
HomeStart, Inc.
Housing Families
Lynn Shelter Association
Mental Health Association, Inc.
Metro North Housing Corp
New England Center and Home for Veterans
Open Sky Community Services
Pine Street Inn
Positive Action Against Chemical Addiction, Inc
Soldier On, Inc
South Middlesex Opportunity Council
St. Francis House
Steppingstone, Incorporated
Transition House
Uphams Crossing
Veterans, Inc
Viability Inc.
Worcester Community Housing Resources

Location of PSH Units



2,192 units funded

35 providers assisted

| Category | Description |
|---------------------------------------|--|
| Lost Rent | Lost rent due to slowdown in moving tenants, holding SRO units as isolation spaces, and tenants unable to pay rent |
| Staffing and Security | Additional security or overnight staffing, expenses for temporary staffing |
| "Other" expenses | Miscellaneous expenses including staff hazard pay, air purifiers, personal protective equipment, etc. |
| Cleaning Services | Additional and intensive cleanings for PSH units and offices |
| Household Needs | Needs arising from limited access to resources due to lockdowns and closing of community day programs, meal sites, etc |
| Damage to Units | Damage as a result of tenants spending more time in unit, relapse, mental health deterioration, or unauthorized visitors |
| Transportation | Taxis/ride-shares, increased use of non-MBTA transport |
| Tele-Case Management | Supplies for remote meetings between case management and tenants in housing |
| Relocation Costs | Relocation due to higher rates of incidents in housing |
| Cleaning Supplies and Moving Expenses | Specialized cleaning supplies, extra expenses when moving clients |

For questions about this summary, please contact MHSA Program Manager, Emily Daubenspeck, at: edaubenspeck@mhsa.net